



V
|
E

VELDORA EVENTS

COORDINATION.DESIGN.PLANNING

WEDDING PLANNING



HI, I'M TINA

Founder and Owner



Thank you for considering Veldora Events!

I specialize in creating thoughtfully planned, beautifully personal weddings that truly reflect the couples I work with. With a passion for meaningful moments and an eye for detail, I'm dedicated to bringing your vision to life in a way that feels effortless and unforgettable.

For me, wedding planning is about more than timelines and checklists, it's about connection. When you choose to work with me, you're not just hiring a planner; you're gaining a partner and a friend. I'll be by your side from the first step to the final send-off, making sure everything runs smoothly so you can stay present and enjoy every moment.

Let's create something beautiful together.



843-465-6521



tina@veldoraevents.com



Facebook: Veldora Events
Instagram: @veldoraevents
www.velddoraevents.com

Full Service

This package is ideal for couples who want a hands-on planner to guide them every step of the way- from vision to execution.

Whether you're just beginning the planning journey or feeling overwhelmed mid-process, the experience can be tailored to fit any timeline or set of needs. It's a perfect fit for those short on time, unsure where to begin, or simply wanting to enjoy the celebration without managing all the details.

- FULL EVENT DESIGN
- PREFERRED VENDOR LIST
- PLANNING CHECKLISTS AND EXPECTATIONS
- DEVELOPMENT & TRACKING OF BUDGET
- CHECK-INS AND DEADLINE REMINDERS
- CUSTOM MOOD BOARD
- ACCESS TO CLIENT PORTAL (ONLINE PROGRAM TO KEEP UP WITH CHECKLISTS, CONTRACTS, BUDGET, SEATING CHART, AND RSVP)
- POINT OF CONTACT FOR VENDORS, ONCE BOOKED
- VENDOR MANAGEMENT
- VENDOR CONTRACT REVIEW
- CUSTOM DAY OF MASTER TIMELINE
- FLOOR PLAN DESIGN
- 1 HOUR REHEARSAL WALKTHROUGH
- DAY OF COORDINATION- UP TO 12 HOURS
- SET UP AND BREAKDOWN (PERSONAL ITEMS ONLY)
- EMERGENCY KIT
- 10 CONSULTATION MEETINGS
- 4 VENUE VISITS
- UP TO 120 HOURS
- (30 HOURS DEDICATED TO MONTH OF)



Partial Service

This package is perfect for couples who want to be hands-on in their wedding planning while receiving expert guidance to ensure everything runs smoothly on the big day.

On the wedding day, dedicated support is provided to make sure the event is executed flawlessly. This option is customized based on the preferences and requirements identified during our initial consultation.



- EVENT DESIGN ASSISTANCE
- PREFERRED VENDOR LIST
- PLANNING CHECKLISTS AND EXPECTATIONS
- MONTHLY REMINDERS AND CHECK-INS
- BUDGET CONSULTATION
- CUSTOM MOOD BOARD
- ACCESS TO CLIENT PORTAL
- ASSISTANCE WITH BOOKING 4 VENDORS
- POINT OF CONTACT FOR VENDORS 4 WEEKS OUT
- VENDOR CONTRACT REVIEW
- DESIGN ADVICE
- TIMELINE REVIEW OR CUSTOMIZATION
- ASSISTANCE WITH FLOORPLAN CREATION
- 1 HOUR REHEARSAL WALKTHROUGH
- DAY OF COORDINATION- UP TO 12 HOURS
- SET UP AND BREAKDOWN
- EMERGENCY KIT
- 6 CONSULTATION MEETINGS (IN-PERSON OR ONLINE)
- 2 VENUE VISITS (INCLUDING FINAL WALKTHROUGH)
- UP TO 80 HOURS (30 HOURS DEDICATED TO MONTH OF)

Wedding Management

Choosing your vendors may be straightforward, but making sure everyone arrives on time and runs smoothly while you enjoy your celebration can be challenging. A wedding day manager is invaluable for handling delegation and timeline management, helping to reduce stress and ensure a relaxed, memorable experience.

Collaborative planning sessions focus on remaining tasks and day-of preparation. A personalized day-of timeline is created to organize all arrangements and provide peace of mind.

- DESIGN ADVICE
- VENDOR RECOMMENDATIONS
- FINAL DETAILS CHECKLIST
- WEEKLY CHECK-INS AND REMINDERS
- POINT OF CONTACT FOR VENDORS 1 WEEK PRIOR
- VENDOR CONTRACT REVIEW
- CUSTOM DAY OF MASTER TIMELINE
- ASSISTANCE WITH FLOORPLAN CREATION
- 1 HOUR REHEARSAL WALKTHROUGH
- DAY OF COORDINATION- UP TO 12 HOURS
- SET UP AND BREAKDOWN (PERSONAL ITEMS ONLY)
- EMERGENCY KIT
- 2 CONSULTATION MEETINGS
- WALKTHROUGH)
- 1 VENUE VISIT (FINAL WALKTHROUGH)
- UP TO 30 HOURS



A la Carte

In addition to core packages, a variety of à la carte services are available to support every detail of your event. Whether a little extra guidance or assistance with specific elements is needed, personalized support can be provided. Below are some of the most requested add-ons, with the option to discuss any unique needs during a complimentary consultation.

GUEST & EVENT ESSENTIALS

- WELCOME BAGS
- PARTY FAVORS
- RSVP & TICKET MANAGEMENT
- STATIONERY MANAGEMENT
- EVENT ADVERTISEMENT

DESIGN & DECOR

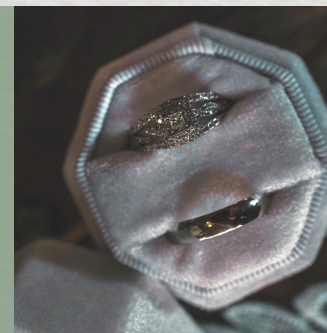
- CENTERPIECES
- DESIGN ONLY
- MORNING-OF SET-UP
COORDINATION ONLY

PLANNING SUPPORT

- ADDITIONAL PLANNING TIME
- ADDITIONAL CONSULTATIONS
- CUSTOM PACKAGE CREATION
- GUIDANCE ONLY

CEREMONY SERVICES

- OFFICIANT SERVICES



Other Events

**Happy to help plan your other special events too!
Pricing is personalized based on the unique details and
needs of each celebration.**



**ENGAGEMENT PARTIES
REHEARSAL DINNER
BRIDAL SHOWER
BACHELOR AND BACHELORETTE PARTIES
ELOPEMENTS
PROPOSALS
VOW RENEWALS
DESTINATION WEDDINGS
BIRTHDAY PARTIES
BABY SHOWERS
GENDER REVEAL PARTIES
GRADUATION PARTIES
HOLIDAY PARTIES
CHURCH EVENTS
OFFICE PARTIES
PICNICS
DATES
B2C EVENT MARKETING CORPORATE EVENTS
SOCIAL & NON-PROFIT EVENTS
NATIONWIDE & INTERNATIONAL VIRTUAL EVENTS
SATELLITE EVENTS
VIRTUAL EVENTS
MEETINGS
AND MORE!**

